

RTC-1000D1

Intel® Core™ Duo U2500

1.2 GHz Processor

Rugged Tablet Computer

with 10.2" WSVGA Color TFT LCD

2 USB2.0, 1 Mini USB

1 COM, 1 VGA

Copyright Notice

This document is copyrighted, 2014. All rights are reserved. The original manufacturer reserves the right to make improvements to the products described in this manual at any time without notice.

No part of this manual may be reproduced, copied, translated, or transmitted in any form or by any means without the prior written permission of the original manufacturer. Information provided in this manual is intended to be accurate and reliable. However, the original manufacturer assumes no responsibility for its use, or for any infringements upon the rights of third parties that may result from its use.

The material in this document is for product information only and is subject to change without notice. While reasonable efforts have been made in the preparation of this document to assure its accuracy, AAEON assumes no liabilities resulting from errors or omissions in this document, or from the use of the information contained herein.

AAEON reserves the right to make changes in the product design without notice to its users.

Acknowledgments

All other products' name or trademarks are properties of their respective owners.

- Intel[®], and Core[™] are trademarks of Intel[®] Corporation.
- Microsoft Windows[®] is a registered trademark of Microsoft Corp.

All other product names or trademarks are properties of their respective owners.

Packing List

Before you begin operating your PC, please make sure that the following materials are enclosed:

- 1 RTC-1000D1 Rugged Tablet Computer with a Hard Disk Drive & 1GB/ 2GB SODIMM Memory Card
- 1 AC Adapter with Power Cord
- 1 Standard Battery
- 1 Hand Strap
- 1 DVD-ROM for system driver & manual
(in PDF format)

If any of these items should be missing or damaged, please contact your distributor or sales representative immediately.

Options

The following items are normally optional, but some vendors may include them in the standard package. Some items may not be available in some countries, or some vendors may choose not to carry all the items.

- GPS Module Kit
- 3.5 G Modem Module Kit
- Office Docking Station
- Vehicle Adapter
- Vehicle Docking Station

***Caution:** when purchasing any of the accessories listed above, purchase only those accessories that are approved for use with your Rugged Tablet Computer. The above accessories are proprietary items. Our system vendor can obtain these approved accessories. If you use items that are not approved for use with this Rugged Tablet Computer, you may cause your Rugged Tablet Computer to malfunction, or to emit or receive electro-magnetic radiation in excess of local regulations. For non-proprietary accessories such as PC cards or printers, ensure that the accessory functions properly in your Rugged Tablet Computer before making the purchase. Your system vendor may be able to recommend reliable brands and models.*

Safety & Maintenance

You can use your Rugged Tablet Computer under a wide range of environmental conditions. However, to ensure long use and continued high performance, consider the following factors when setting up your Rugged Tablet Computer (RTC):

- Follow all warnings and instructions noted in this documentation and in the Windows Help program.
- The first time you use your RTC, we recommend that you carefully read the Making Connections section of this manual and initialize the battery to ensure optimum battery performance.
- Unplug the RTC from the power outlet before cleaning. Use a damp cloth for cleaning. Do not use aerosols, solvents, or strong detergents.
- Slots and openings in the system cabinet are for ventilation purposes. Do not block or cover these openings or the system could overheat. Do not use or store the RTC near a source of heat or dust.
- On the base or rear panel of this RTC, there is a label with information on the power requirements of this system. These requirements must be followed. If you are unsure of your local power supply, consult your dealer or local Power Company.
- Do not step on or place anything on the power cord.
- If you use the RTC with an extension cord, ensure that the total ampere ratings of all the devices sharing the extension do not exceed the rating of the extension cord or the rating of the wall

outlet.

- Never push foreign objects into the RTC through any of the slots or openings. Dangerous voltages are present, which could cause electric shock or fire, or damage sensitive components.

FCC

Warning!



This device complies with Part 15 FCC Rules. Operation is subject to the following two conditions: (1) this device may not cause harmful interference, and (2) this device must accept any interference received including interference that may cause undesired operation.

Caution:

There is a danger of explosion if the battery is incorrectly replaced. Replace only with the same or equivalent type recommended by the manufacturer. Dispose of used batteries according to the manufacturer's instructions and your local government's recycling or disposal directives.

Attention:

Il y a un risque d'explosion si la batterie est remplacée de façon incorrecte. Ne la remplacer qu'avec le même modèle ou équivalent recommandé par le constructeur. Recycler les batteries usées en accord avec les instructions du fabricant et les directives gouvernementales de recyclage.

Below Table for China RoHS Requirements

产品中有毒有害物质或元素名称及含量

AAEON Panel PC/ Workstation

部件名称	有毒有害物质或元素					
	铅 (Pb)	汞 (Hg)	镉 (Cd)	六价铬 (Cr(VI))	多溴联苯 (PBB)	多溴二苯醚 (PBDE)
印刷电路板 及其电子组件	×	○	○	○	○	○
外部信号 连接器及线材	×	○	○	○	○	○
外壳	×	○	○	○	○	○
中央处理器 与内存	×	○	○	○	○	○
硬盘	×	○	○	○	○	○
液晶模块	×	○	○	○	○	○
光驱	×	○	○	○	○	○
触控模块	×	○	○	○	○	○
电源	×	○	○	○	○	○
<p>O: 表示该有毒有害物质在该部件所有均质材料中的含量均在 SJ/T 11363-2006 标准规定的限量要求以下。</p> <p>X: 表示该有毒有害物质至少在该部件的某一均质材料中的含量超出 SJ/T 11363-2006 标准规定的限量要求。</p> <p>备注： 一、此产品所标示之环保使用期限，系指在一般正常使用状况下。 二、上述部件物质中央处理器、内存、硬盘、光驱、触控模块为选购品。</p>						

Contents

Chapter 1 Introduction

1.1 Getting Started	1-2
1.2 Features	1-3
1.3 Where to Look For Information	1-4
1.4 Quick Start.....	1-5
1.5 Loading Windows	1-6
1.6 Adjusting the Volume	1-7
1.7 Adjusting the Brightness	1-8
1.8 Turning off your RTC.....	1-9

Chapter 2 Getting Started

2.1 Appearance	2-3
2.2 Power Indicators.....	2-5
2.3 Front View Buttons	2-6
2.4 Function Keys.....	2-8
2.5 Quick Start Button	2-9
2.6 Connecting the Printer.....	2-10
2.7 The PCMCIA Card Slot	2-10
2.8 CompactFlash (CF) Card Slot.....	2-11
2.9 Memory	2-11
2.10 Communication Components.....	2-14

Chapter 3 Making Connections

3.1 Right Side Connectors	3-2
---------------------------------	-----

3.2 Top Side Connectors..... 3-4

Chapter 4 Power Management

4.1 Power Management 4-2

4.2 When to Replace the Battery 4-4

4.3 Heat Considerations..... 4-4

Appendix A Statements

A.1 StatementsA-2

A.2 European NoticeA-5

A.3 Safety CAUTION.....A-6

A.4 Battery DisposalA-7

A.5 CAUTION for AdapterA-7

A.6 Battery CAUTIONA-8

Chapter

1

Introduction

1.1 Getting Started

Congratulations on your purchase of a **Rugged Tablet Computer (RTC)**. The RTC is a fully functional PC with built-in LAN, and wireless connectivity. With your RTC you will be able to organize and access important business and personal information. In addition, you will be able to send and receive e-mail and access the Internet.

This Manual contains all the information you need to set up and use your RTC. It describes all the features of the RTC in an easy-to-read yet thorough manner.

1.2 Features

Software Included

Windows® Embedded Standard 2009 Edition which includes:

- Microsoft® Internet Explorer
- Microsoft® Outlook Express
- Microsoft® Windows Media Player

High performance Processors

Ultra Low Voltage Mobile Intel® Core™ Duo U2500 1.2 GHz CPU

High Capacity Hard Disk Drive

The Rugged Tablet Computer has a high capacity hard disk drive, to store your favorite programs and large multimedia files.

Built-in Wireless LAN, Modem and LAN Capability

The built-in 802.11b/g, 56k modem and 10/100/1000 Mbps Ethernet ports allow you to access the Internet or a Local Area Network (LAN).

1.3 Where to Look For Information

About Your RTC

This User's Manual describes the key elements of your RTC. New users can find a simple step-by-step orientation in the Quick Start section of this Chapter.

About Windows

Windows Online Help, found on the Start menu, offers extensive Windows assistance. **Welcome to Windows** offers an online orientation for new Windows users. Find it in:
Start/Programs/Accessories/System Tools.

1.4 Quick Start

Turning on the Rugged Tablet Computer for the First Time



1. Connect the AC adapter power cord to the AC adapter.
2. Connect the AC adapter to the DC power port on the bottom side of your RTC.
3. Connect the AC adapter power cord to an AC outlet.
4. Press the power button to turn on the power.

Note: The battery is not fully charged. Allow your battery to fully charge before using it (i.e., before disconnecting AC power). Calibrating the battery before use is also highly recommended. Refer to Chapter of *Power Management* for further information.

1.5 Loading Windows

The following section is for the Windows operating system only. If you are installing a different operating system, please check with your vendor for installation details.

Your RTC will begin loading Windows once you turn on the power. Wait a few seconds for Windows setup to load.

The Welcome to Windows screen will appear. You may disable this feature by clearing the check box labeled **show this screen each time Windows starts**.

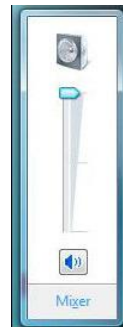
Some software comes preloaded with Windows. New users can familiarize themselves with this software by selecting Programs from the start menu, then clicking on programs to run them.

1.6 Adjusting the Volume

You can adjust the volume with hot key:

- Fn + Arrow Up: volume up
- Fn + Arrow Down: volume down

Alternatively, you can adjust the volume with the Windows volume control applet located on the taskbar.



1.7 Adjusting the Brightness

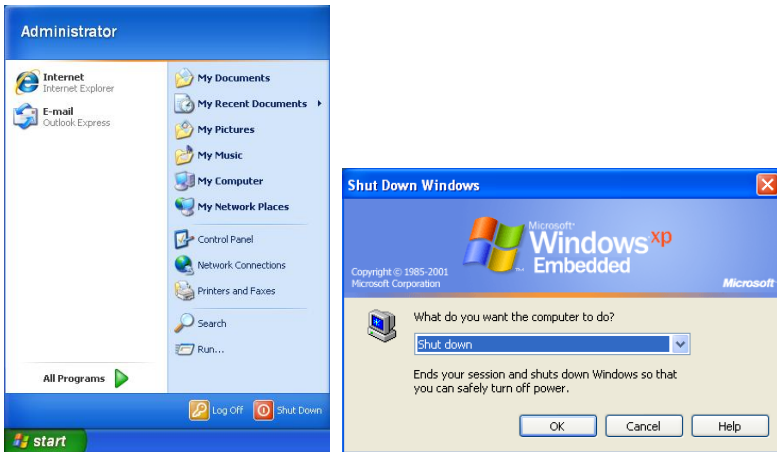
Use the following hot key combinations to adjust the LCD panel brightness:

- Fn + Arrow Left: decreases the brightness
- Fn + Arrow Right: increases the brightness

1.8 Turning off your RTC

Turning off the RTC properly is important to maintain the RTC.

1. On the Start menu, click **Shut Down**.
2. Click the radio button next to **Shut Down** in the Shut Down Windows screen, and then click **OK**.



If you are going to be away from the RTC for a short period, there are ways of conserving power without shutting down the system.

Warning!



Warning: Shutting off the RTC improperly may result in data loss.

Chapter

2

Getting Started

Hardware and Software

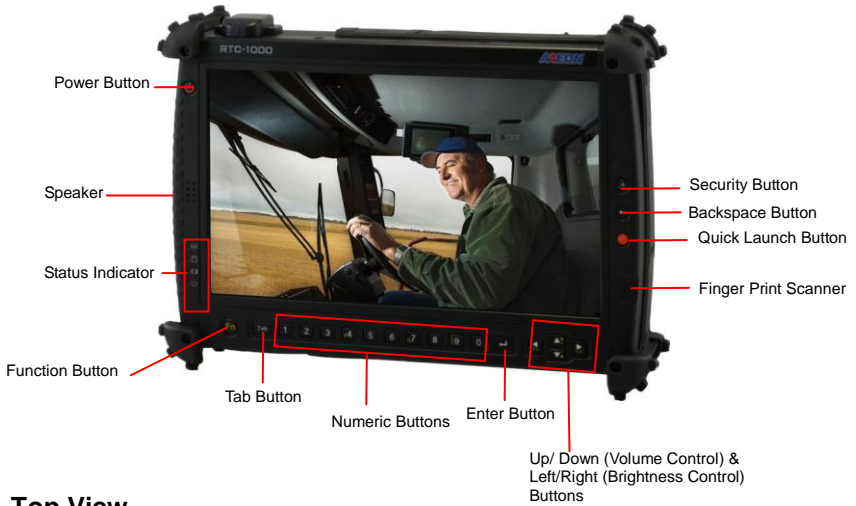
This chapter introduces the different components and controls of your RTC, including the hardware components, the software, and the audio and video systems.

Getting Started

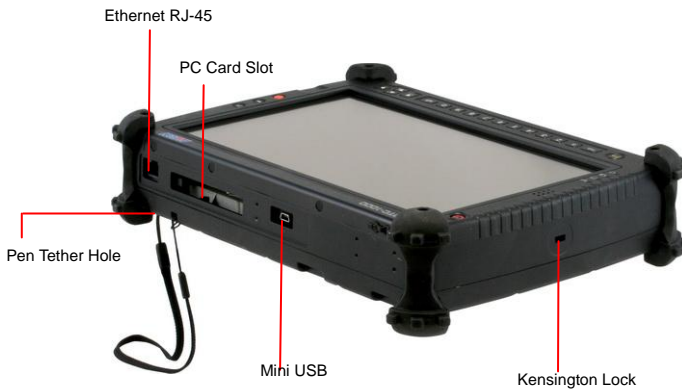
Before you begin using your RTC, read this chapter to familiarize yourself with the main components installed in the system.

2.1 Appearance

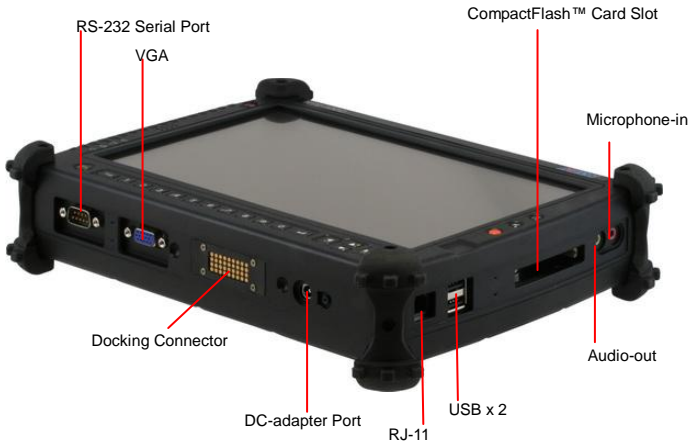
Front View



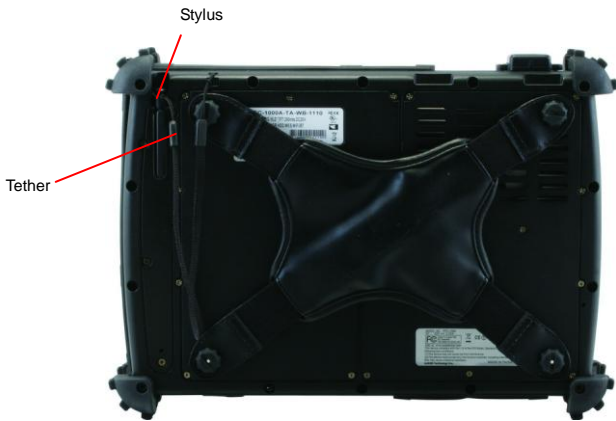
Top View



Right and Bottom View






Rear View



2.2 Power Indicators







The power indicators show which power source the system is using. They also show battery status and low battery power alerts. The power indicators remain active and viewable even when the LCD panel is closed.





Icon	Light	Description
	Blue	Wireless LAN/ Bluetooth is in use
	Green	RTC is reading from, or writing to the built-in hard disk.
	Green	Battery fully charged
	Orange	Battery charging
	Flashing Red	Battery Power critically low
	Blue	Power is on and the battery is in use
	Flashing Blue	Power is in suspend mode



2.3 Front View Buttons

The seven hot keys are unique features of your RTC. The function as follows:

Icon	Function
	Power Button The power button turns system on and goes into standby automatically. If the unit has been sitting unused for a while. Press momentarily to turn on the system or to exit from standby. Press and hold for at least 3-4 seconds to turn off the system. These settings can be changed.
	Security Button Similar function as pressing Ctrl+Alt+Delete on a standard keyboard.
	Function Button Access to secondary operation of some buttons on the front bezel (shown in the illustration above), user set up.
	Backspace Button Same function as on a standard keyboard.
	Quick-Launch Button (Orange Coating) Can be assigned to launch specific windows base program as a quick-launcher.
	Enter Button Same function as on a standard keyboard.

	Tab Button Under Normal Input Mode: Same function as on a standard keyboard. Under Calculation Mode: Role as “Period” (.).
	Up/ Down Button Same function as on a standard keyboard.
	Left/ Right Button Under Normal Mode: Same function as on a standard keyboard. Under Calculation Mode: Arrow Left/ Arrow Right: -/+
	Numeric Key Same function as on a standard keyboard.

2.4 Function Keys

Hold the Fn Key while pressing the function key.

Function Key	Description
Fn + Down	Volume Down
Fn + Up	Volume Up
Fn + Left	Brightness Decrease
Fn + Right	Brightness Increase
Fn + 1	Quick Launch (Execute AP) = Orange Quick-Launch Button
Fn + 2	TBD
Fn + 3	TBD
Fn + 4	Keypad LED Backlight On/Off
Fn + 5	Switch Calculation and Normal Input Mode
Fn + 6	TBD
Fn + 7	G-sensor On/Off (Screen Auto-Rotation On/Off)
Fn + 8	TBD
Fn + 9	ESC (Escape: Same as Standard Keyboard)

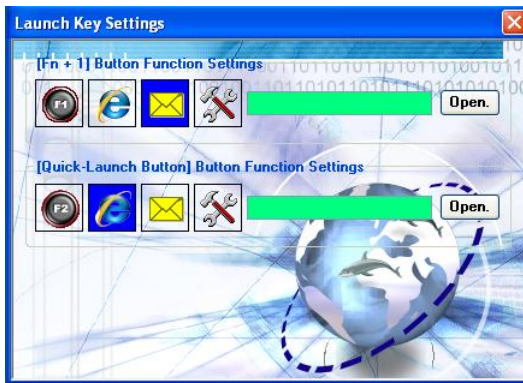
2.5 Quick Start Button

Function+1 & Quick-Launch Button: Can be customized to launch specific win-base program assigned in Quick Start Button tool.

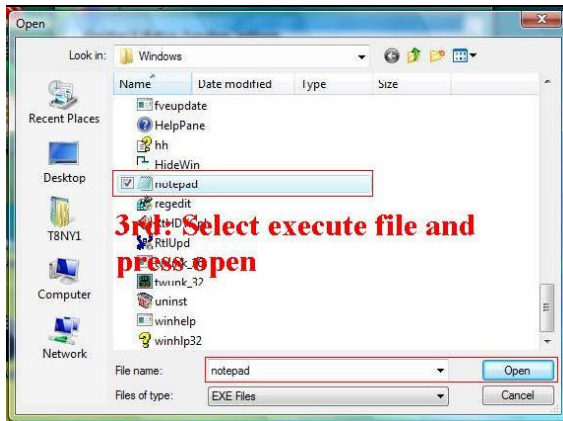
1. Click on “QSB” icon found at status bar.



2. Click on “Open” to select any application you would like to launch it by individual function key.



3. Select execute file and press open.



Note: Up to 2 “ Quick Launch” function keys can be assigned to specific application depends on BIOS configuration.

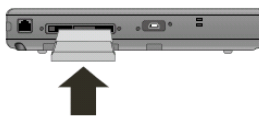
2.6 Connecting the Printer

To connect a printer to your RTC via the USB port, use the supplied USB to printer adapter cable.

Note: Before use, you must install the driver for the adapter cable.

2.7 The PCMCIA Card Slot

Your RTC includes card slot which supports PCMCIA Type II, 32-bit CardBus.



Note: Please read the instructions included with individual PC cards.

Some cards may be inserted with power on, while others require that the RTC be turned off.

2.8 CompactFlash (CF) Card Slot

The CF card slot can be used as an interface between your RTC and a variety of devices. Insert a CF card in the CF Card Slot as shown below until it snaps into place. Press the eject button to release the card.



2.9 Memory

Adding memory allows the RTC to operate faster, handle more tasks simultaneously, and work more smoothly with large files. Users who increase memory demands - by adding additional programs, for example - may notice a slowdown in operating speed, and wish to increase memory.

The RTC includes a memory card slot for adding additional memory.

Note: Use only 1-inch DDRII SODIMM modules.

Replacing a Memory Card

Warning!

Warning: Memory modules can be easily damaged by static electricity. Leave the module inside its static-proof bag until it is ready for installation.

Removing a Memory Card

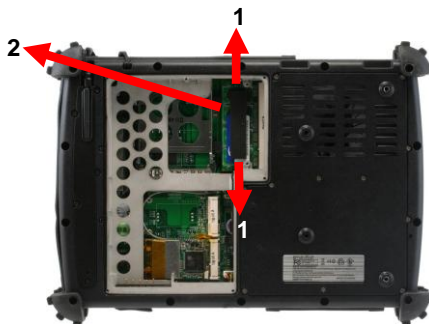
Turn off the RTC and disconnect the AC adapter. Turn the RTC upside down and lay it on a flat surface.

Carefully remove the two RAM compartment cover screws and remove the RAM compartment cover.

Carefully remove the GPS module screws, unplug GPS harness then remove GPS module. (GPS module is optional)

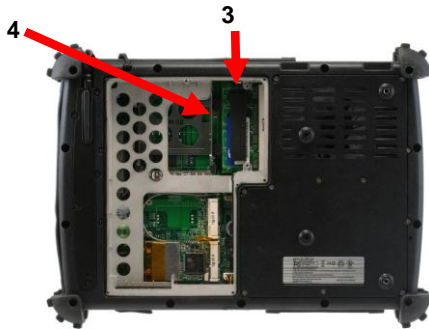
Gently pull tabbed latched in the direction of the arrows (1). The card will pop up slightly.

Pull upwards on the card and then slide the card out (2).



Inserting a Memory Card

1. Hold the memory card by its edges with the edge-connector side towards the slot.
2. Hold the card at a shallow angle (about 25 degrees) and insert the edge connector into the connector slot (3). The “gold teeth” of the edge connector should no longer be visible when the card is fully inserted.



3. Press the card downwards so that it is flat inside the compartment (4). You may hear an audible click as the latches of the connector lock the card in place.
4. Replace GPS module, attach harness and secure it with screws.
5. Replace the RAM compartment cover and secure it with the two screws.

Your RTC will automatically detect the change in RAM capacity when it restarts.

2.10 Communication Components

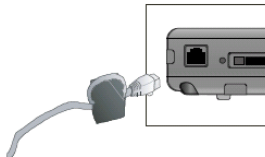
The system includes built-in Fax/Modem.

Fax/Modem

A phone jack on the top side of the RTC allows you to connect to the Internet to send and receive data. When used with fax software, it can be used as a fax. When using this function, first plug the phone cord into the jack.

Anti-electromagnetic wave clip

To eliminate electromagnetic waves, it is strongly recommended that you thread the USB cable or phone cord through the clip provided as shown below when using USB peripherals, audio-out jack or connecting to a phone line.



Attention: When using the data communications function, please do not plug the phone cord into the ISDN or PBX jack to avoid an electrical surge that will cause the MDC module to burn.

Chapter

3

Making Connections

Making connections

Your RTC is equipped with a full array of ports and connectors, including standard input/output (I/O) ports for quickly and easily adding peripheral devices such as printers, keyboards, and mice. Refer to documentation included with individual devices for details on connecting these devices to your RTC.

3.1 Right Side Connectors



1. Microphone-in Jack

Connect a microphone this jack to record audio.

2. Audio-out Jack

Connect a stereo headset or external speakers to this jack to listen to multimedia.

3. CF Card Slot

Accepts devices that are designed to use CF card interface. Insert a CF card in the CF Card Slot as shown above until it snaps into place.

Press the eject button to release the card.

4. USB (Universal Serial Bus) Ports

The Universal Serial Bus (USB) is the latest standard for attaching monitors, input devices, scanners, and other devices to a PC. USB devices can be chained together on a single cable.

5. Fax/Modem RJ-11 Jack

The fax/modem can transmit data using the 56 Kbps V.90 protocol, and send and receive faxes at 14.4 Kbps. In some countries, local regulations may not permit the use of the fax/modem designed for this system. In this case, you may use a PCMCIA modem.

6. DC-in Jack

Connect the DC power cable from the AC adapter to this jack.

7. Multi IO Connector

The Connector is reserved for specific purpose, which is used to connect to customer's device.

8. Standard D-Sub VGA Port

9. Standard D-Sub RS-232 Port

3.2 Top Side Connectors



1. LAN RJ-45 Jack

With the built-in Ethernet LAN combo, you can make LAN connections without installing PC cards. Connection speed is 10/100/1000 Mbps. When using the LAN function, wrap your LAN cable around the EMI ferrite suppression box to inhibit electromagnetic interference.

Warning!



Warning: Plug your modem into an analog telephone jack only. Most homes use analog lines. Do not use digital lines, such as the PBX and ISDN systems found in many offices. Digital lines may damage your modem.

2. PC Card Slot (PCMCIA)

Insert a PC Card (PCMCIA) card in the PC Card Slot as shown above until it snaps into place. Press the eject button to release the card.

3. Mini USB Port

The Universal Serial Bus (USB) is the latest standard for attaching monitors, input devices, scanners, and other devices to a PC. USB devices can be chained together on a single cable. This mini-USB port can only play as host role.

Chapter

4

Power Management

4.1 Power Management

Checking the Battery Level

You can check the remaining battery power in the Windows® battery status indicator located at the lower right-hand corner of the task tray. The Battery Status icon only appears in the task tray while the unit is running on the battery power but not while the unit is running off an external power source through the AC adaptor.



Battery Power Indicator

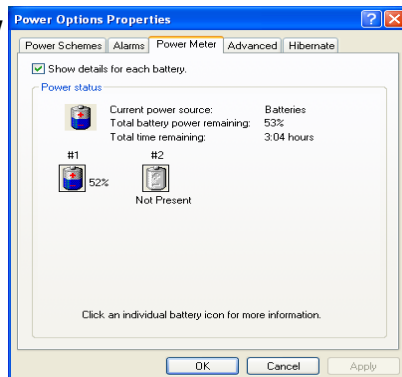
Enter Monitoring Battery Power

There are two ways to monitor how much power the battery has left.

1. Click **Start/Control Panel /**

Power Options then click Power Meter.

2. Moving the cursor to the battery icon on the taskbar is the simplest way to check on battery power status.



If you do not see the battery icon, enable it in **Start / Control Panel / Power Options**. Choose the Advanced tab and click “Always show icon on the taskbar.”

Low Battery Alarms

How your RTC responds to a low battery condition is set under **Start/ Control Panel / Power Options / Alarms**.

Two different power alarms can be enabled or disabled: the Low Battery Alarm, and the Critical Battery Alarm.

Warning!



Warning: When battery power is low, the battery indicator will flash red, and the alarm will display a warning on your screen. Take immediate action, such as saving files or connecting to the AC adapter, or data may be lost.

Battery Charging

When you use the AC adapter to connect your RTC to a power outlet, the internal battery will automatically begin to recharge. While the battery is charging, the Battery Charge icon on the Indicator panel will be active after 6~12 seconds. When the battery is fully charged, the Battery Charge icon will turn off.

If your RTC is turned off, a fully discharged battery will take about 3 hours to recharge. If your RTC is turned on and is not in suspend mode, it will take about 4~5 hours to recharge the battery. Refer to the following table:

	Charging
System On (Under Screen Saver Mode)	4~5 hours
System Off (Suspend to RAM)	~4 hours

Note: A fully charged Li-ion Battery can run the RTC for approximately 6.0 hours.

4.2 When to Replace the Battery

Over time, the battery's capacity gradually decreases. We recommend that you replace your battery when you notice that it begins to store significantly less charge.

Changing the Battery

Change the main battery pack as follows:

1. Turn off the RTC.
2. To replace the Battery remove the screw and the Battery Bay Cover shown right
3. Make sure the replacement battery is properly orientated. Then insert the battery into the battery compartment. Check that the latch locks back into position.



4.3 Heat Considerations

The RTC processor has been specially designed to consume little power, and generates very little heat. However, working in a hot environment, or working for long periods may raise the temperature.

If the temperature continues to rise, processor activity will be reduced. You may notice a slight loss of performance when this happens.

Calibrating the Touch Screen

1. Click the Windows® Start button > Control Panel > Switch to Classic View > TouchSet Utility Settings. Under the calibration tab, click Calibrate and follow the on-screen instructions shown below.
2. Click the stylus in the middle of the crosshairs. The wheel moves to another location on-screen.
3. Repeat the exercise as above several times until the screen returns to the Calibration Applet
4. Click OK, The recalibration takes place immediately upon exiting the application. No need to restart the RTC.

Appendix

A

Statements

A.1 Statements

Federal Communications Commission Statement

This equipment has been tested and found to comply with the limits for a Class B digital device, pursuant to Part 15 of the FCC Rules. These limits are designed to provide reasonable protection against harmful interference in a residential installation. This equipment generates, uses, and can radiate radio frequency energy and, if not installed and used in accordance with the instructions, may cause harmful interference to radio communications. However, there is no guarantee that interference will not occur in a particular installation. If this equipment does cause harmful interference to radio or television reception, which can be determined by turning the equipment off and on, the user is encouraged to try to correct the interference by one or more of the following measures:

1. Reorient or relocate the receiving antenna.
2. Increase the separation between the equipment and the receiver.
3. Connect the equipment into an outlet on a circuit different from that to which the receiver is connected.
4. Consult the dealer or an experienced radio/TV technician for help.

Shielded interconnect cables and shielded AC power cable must be employed with this equipment to insure compliance with the pertinent RF emission limits governing this device. Changes or modifications not expressly approved by the system's manufacturer

could void the user's authority to operate the equipment.

CAUTION: Any changes or modifications not expressly approved by the party responsible for compliance could void the user's authority to operate the equipment.

Declaration of Conformity

This device complies with part 15 of the FCC rules. Operation is subject to the following conditions:

- This device may not cause harmful interference
- This device must accept any interference received, including interference that may cause undesired operation.

About The Modem

This equipment complies with Part 68 of FCC rules. On the bottom of this equipment is a label that contains, among other information, the FCC registration number and ringer equivalence number (REN) for this equipment. If requested, this information must be provided to the telephone company.

The modem jack of this equipment complies with Sub-part F of Part 68 of FCC rules.

The REN is used to determine the quantity of devices that may be connected to the telephone line. Excessive RENs on the telephone line may result in the devices not ringing in response to an incoming call. In most, but not all areas, the sum of the RENs should not exceed five (5.0). To be certain of the number of devices that may be connected to the line, as determined by the total RENs contact

the telephone company to determine the maximum REN for the calling areas.

If the terminal equipment causes harm to the telephone network, the telephone company will notify you in advance that temporary discontinuance of service may be required. However, if advance notice isn't practical, the telephone company will notify the customer as soon as possible. Also, you will be advised of your right to file a complaint with the FCC if you believe it necessary. The telephone company may mark changes in its facilities, equipment, operations, or procedures that could affect the operation of the equipment. If this happens, the telephone company will provide advance notice in order for you to make the necessary modifications in order to maintain uninterrupted service.

If trouble is experienced with this equipment, please contact the manufacturer for repair and (or) warranty information. If the trouble is causing harm to the telephone network, the telephone company may request you remove the equipment from the network until the problem is resolved.

The equipment cannot be used on public coin service provided by the telephone company. Connection to Party Line Service is subject to state tariffs. (Contact the state public utility commission, public service commission or corporation commission for information.)

The Telephone Consumer Protection Act of 1991 marks it unlawful for any person to use a computer or other electronic device, including fax machines, to send any message unless such

message clearly contains in a margin at the top or bottom of each transmitted page or on the first page of the transmission, the date and time it is sent and an identification of the business or other entity, or other individual sending the message and the telephone number of the sending machine or such business, other entity, or individual. (The telephone number provided may not be a 900 number or any other number for which charges exceed local or long-distance transmission charges.) To program this information, refer to the manual of the communication software.

A.2 European Notice

CE Declaration of Conformity

For the following equipment: Tablet built-in 802.11b/g WLAN module

Is herewith confirmed to comply with the requirements set out in the Council Directive on the Approximation of the Laws of the Member States relating to Electromagnetic Compatibility (89/336/EEC), Lowvoltage Directive (73/23/EEC) and the Amendment Directive (93/68/EEC), the procedures given in European Council Directive 99/5/EC and 89/3360EEC.

The equipment was passed. The test was performed according to the following European standards:

- EN 300 328 V.1.4.1 (2003-04)
- EN 301 489-1 V.1.3.1 (2001-09) / EN 301 489-17 V.1.1.1

(2000-09)

- EN 60950-1: 2001+ All 2004

Regulatory statement (R&TTE / WLAN IEEE 802.11b & 802.11g)

European standards dictate maximum radiated transmit power of 100mW EIRP and frequency range 2.400-2.4835GHz; In France, the equipment must be restricted to the 2.4465-2.4835GHz frequency range and must be restricted to indoor use.

A.3 Safety CAUTION (AVERTISSEMENT de sécurité)

To reduce the risk of fire, use only No. 26 AWG or larger telecommunication line cord.

Pour réduire les risques d'incendie, merci de n'utiliser que le cordon de télécommunication n° 26AWG ou plus grand.

IMPORTANT SAFETY INSTRUCTIONS

When using your telephone equipment, basic safety precautions should always be followed to reduce the risk of fire, electric shock and injury to persons, including the following:

Do not use this product near water, for example, near a bathtub, wash bowl, kitchen sink or laundry tub, in a wet basement or near a swimming pool.

Avoid using a telephone (other than a cordless type) during an electrical storm. There may be a remote risk of electric shock from lightning.

Do not use the telephone to report a gas leak in the vicinity of the leak.

Use only the power cord and batteries indicated in this manual. Do not dispose of batteries in a fire. They may explode. Check with local codes for possible special disposal instructions.

A.4 Battery Disposal (Recyclage de la batterie)

This product contains a Lithium-ion or Nickel-metal Hydride Battery. It must be disposed of properly. Contact local environmental agencies for information on recycling and disposal plans in your area.

Ce produit contient une batterie hybride Lithium-Ion ou Nickel-métal. Elle doit être recyclée correctement. Contacter votre agence environnementale locale pour toute information sur le recyclage dans votre localité.

A.5 CAUTION for Adapter (AVERTISSEMENT sur l'adaptateur)

This RTC is for use with model NO. 0335A2065, 0335C2065.

Ce modèle RTC doit être utilisé avec les références 0335A2065, 0335C2065

A.6 Battery CAUTION

Danger of explosion if battery is incorrectly replaced. Replace only with the same or equivalent type recommended by the manufacturer. Dispose of used batteries according to the manufacturer's instructions.

Regulatory information / Disclaimers

Installation and use of this Wireless LAN device must be in strict accordance with the instructions included in the user documentation

provided with the product. Any changes or modifications (including the antennas) made to this device that are not expressly approved by the manufacturer may void the user's authority to operate the equipment. The manufacturer is not responsible for any radio or television interference caused by unauthorized modification of this device, or the substitution of the connecting cables and equipment other than manufacturer specified. It is the responsibility of the user to correct any interference caused by such unauthorized modification, substitution or attachment. Manufacturer and its authorized resellers or distributors will assume no liability for any damage or violation of government regulations arising from failing to comply with these guidelines.

Battery Charging Temperature

Charging the battery pack between 0°C ~ 40°C ambient

temperature. Otherwise, it will cause the damage of battery pack. In addition, the battery charging will not start if the battery pack is not in this temperature range.